

### LIGHT LOCK 30X



Light & Surface (Dual) Cure



Flexible & Elastic



Multi-substrate Adhesion



Low Blooming



Fast Bonding



Gap Filling

**Born<sup>2</sup>Bond™ Light Lock 30X** is a patented<sup>†</sup>, low-odor, low-blooming, dual cure (contact and light), hybrid cyanoacrylate-acrylate adhesive, designed for bonding applications that require fast fixturing, coating or surface curing. UV and visible light activate both cyanoacrylic and acrylic systems, resulting in a rapid, tough and flexible bond on transparent parts and on bulk or surface-coated areas, achieving 30x more elongation than standard **Born<sup>2</sup>Bond™ Light Lock**. The instant bonding ensures cure between opaque substrates (contact cure).

#### FEATURES

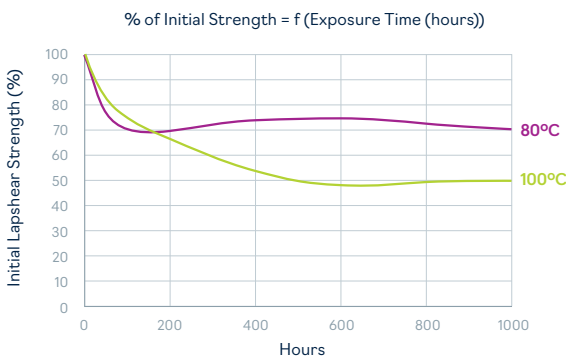
- Dual cure formulation: instant and photo-cure
- Can be cured with visible and UV-LED light in under 5 seconds
- Fixture time in 60 seconds\* (without light exposure)
- High elongation, flexibility and toughness
- Long open time without activation
- Dry to touch, tack-free surface cure
- Cure-on-demand of excess material released from bondlines
- Low odor, low blooming
- Medium viscosity

#### TYPICAL APPLICATIONS

- Conformal coating
- Encapsulation
- Plastic to plastic, and plastic to metal bonding
- Bonding for jewelry, watches, perfume and liquor bottles
- Electronics and audio assembly



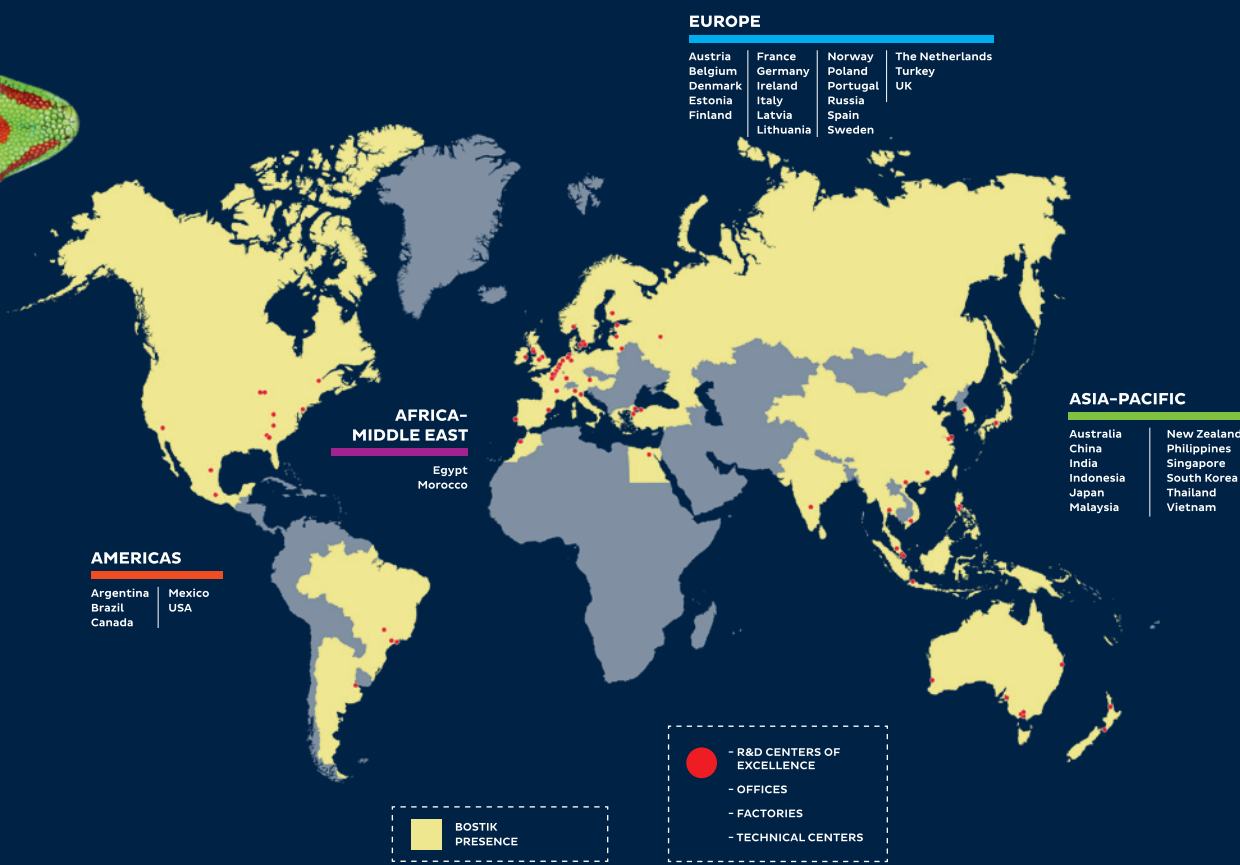
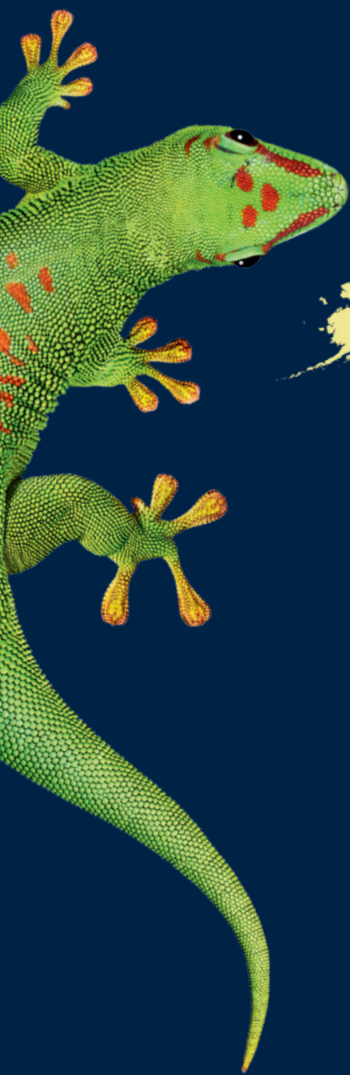
**LIGHT LOCK 30X**



<b>BASE</b>	Methoxyethyl Cyanoacrylate/ Polyfunctional Acrylate
<b>VISCOSITY</b>	150 - 350 cP
<b>BOND STRENGTH</b>	Grit Blasted Steel - 3 MPa
<b>TENSILE STRENGTH (MPa - ISO 527)</b>	38
<b>ELONGATION AT BREAK (% - ISO 527)</b>	120
<b>APPEARANCE</b>	Transparent after cure
<b>TEMPERATURE RANGE</b>	-40°C to +60°C (-40°F to +140°F)
<b>AVAILABLE IN</b>	Bottles: 20g, 500g

TDS and SDS available on request





## DISCLAIMER

Bostik offers this Product Catalogue for descriptive and informational use only. The Product Catalogue is not a warranty, a contract or a substitute for expert or professional advice.

The statements, technical information and recommendations contained herein are not exhaustive, are believed to be accurate as of the date hereof, and are not warranted or guaranteed in any way. They represent typical results for the products and are based on Bostik's research only. The Product Catalogue relies upon your knowledge and input, and as such, its results are based solely upon the information you provide and the choices that you make. Since the conditions and methods of use of the products and the information relied upon by you are beyond our control, Bostik expressly disclaims any and all liability and damages that may arise from any use of the Product Catalogue, the products, the results therefrom, or reliance on the information contain herein.

The Product Catalogue is one of several tools that may be used to help you find the product best suited for your needs. It is used at your own risk, and by using it, you are knowingly accepting and assuming any and all risks associated with its use, the recommendations contained in it, any output and your selections. The performance of the product, its shelf life, and application characteristics will depend on many variables, including but not limited to the kind of materials to which the product will be applied, the environment in which the product is stored or applied, and the equipment used for application, among other things. Any change in any of these variables can affect the product's performance. You are responsible to test the suitability of any product in advance for any intended use. Bostik does not guarantee the reliability, completeness, use, or function of the Product Catalogue or any recommendations arising therefrom. The data and information contained in the Product Catalogue is provided 'AS IS'.

The information provided herein relates only to the specific products designated and may not be applicable when such products are used in combination with other materials or in any process. **Bostik encourages you to always read and understand (1) the Technical Data Sheet ("TDS") and (2) the Safety Data Sheet ("SDS") for all products, which are located on our corporate website or are available upon request.** You are welcome and encouraged to contact your customer service representative to discuss your specific requirements and to determine what product is appropriate for you and your applications.

Nothing contained herein constitutes a license to practice under any patent, and it should not be construed as an inducement to infringe any patent. You are advised to take appropriate steps to be sure that any proposed use of the products will not result in patent infringement.

**Bostik**  
an Arkema company  
[born2bond.bostik.com](http://born2bond.bostik.com)

04.2022  
©2022 Bostik. All rights reserved.

