

NEW
360° valve
spray system
can be used
at any angle



SERVICE PRODUCTS

Easy-to-use **Born2Bond™** ancillary products designed to clean substrates, loosen seized parts and keep moving parts in operation.

Born2Bond™ Pre-Bonding Cleaner

is suitable for cleaning of all kinds of substrates prior to bonding. Solvent-based and supplied in aerosol form, it will easily remove grease, oil, lubricants and other contaminants without leaving any residue.

Born2Bond™ 6-in-1 Lubricant

is a multi-purpose lubricant designed to keep moving parts operating correctly. It repels moisture, prevents corrosion and uses a capillary effect to penetrate rust - making it perfect for general maintenance in workshops.

Born2Bond™ Seez Release

uses a thermal freeze shock effect to loosen rusted, corroded and seized parts within machinery - diffusing directly into rust by capillary force.

FEATURES

- Fast evaporation
- No residues
- Suitable for multiple substrates including sensitive plastics
- 360° valve spray system can be used at any angle

FEATURES

- Lubricates moving parts
- Prevents seized parts
- Prevents corrosion
- Repels moisture
- Silences squeaky hinges
- Penetrates rust with capillary effect
- 360° valve spray system can be used at any angle

FEATURES

- Loosens rusted, corroded and seized parts by thermal freeze shock effect
- Diffuses directly into the rust by capillary force
- 360° valve spray system can be used at any angle

TYPICAL APPLICATIONS

Metal and plastic parts, composite materials, flanges, bolts, shafts.

TYPICAL APPLICATIONS

- Servicing and general maintenance in workshops
- Lubrication of couplings and cables
- Removal of moisture from electronics

TYPICAL APPLICATIONS

- For the release of rusted and corroded parts
- Facilitates maintenance of seized components in tools, machines and vehicles





SERVICE PRODUCTS

To ensure optimal performance of **Born2Bond™** adhesives, we provide a selection of easy-to-use ancillary products for faster curing and removal of cured product.

Born2Bond™ Adhesive & Gasket Remover

is easy to apply and creates a foam-like layer, softening old gaskets and cured adhesives for removal within 15 minutes.

FEATURES

- Removes cured gaskets and adhesives within 15 minutes
- Minimal damage to flanges and surfaces
- Suitable for multiple substrates

TYPICAL APPLICATIONS

Cleaning of surfaces, flanges, gearboxes, metal housings, pumps.



Born2Bond™ Anaerobic Activator

is a solvent-based product that accelerates and supports anaerobic adhesive curing on passive metals like stainless steel, chromated metals and zinc. It can also accelerate cure speed in larger gaps and increase bonding strength.

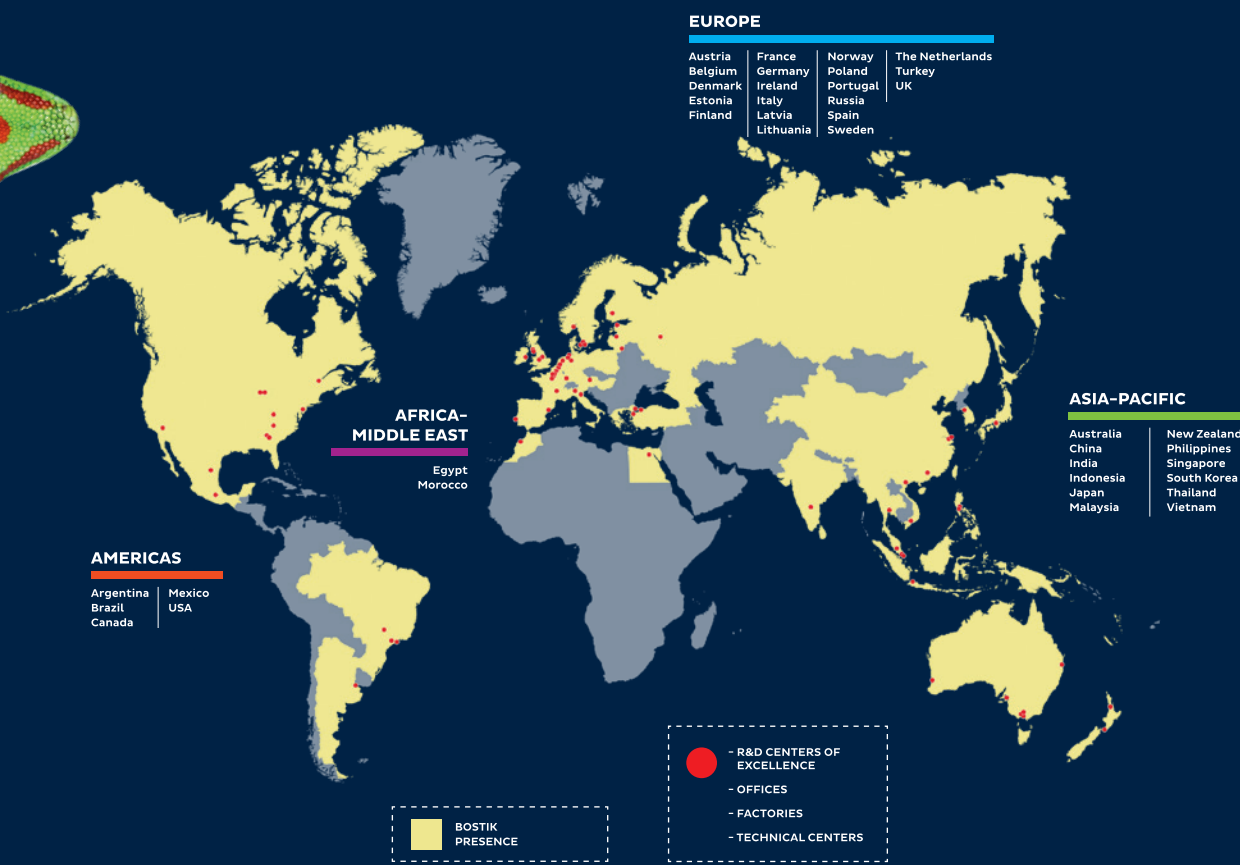
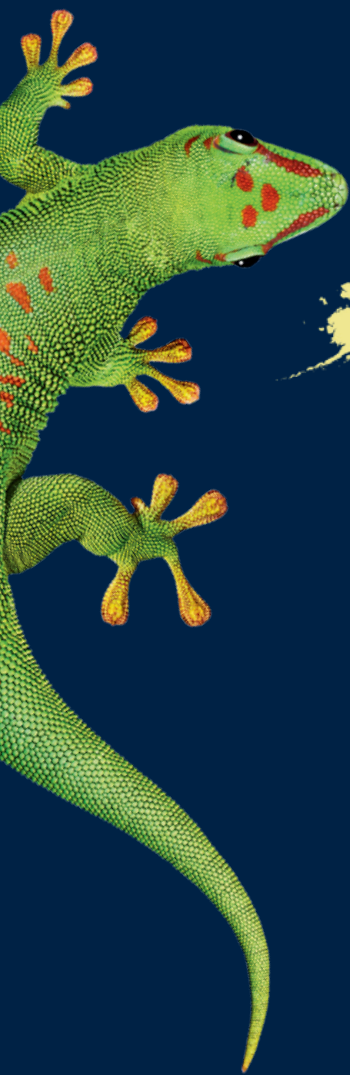
FEATURES

- Fast-evaporating with no residue
- Can be used at low temperatures (<5°C)
- On-part lifetime of 30 days

TYPICAL APPLICATIONS

Stainless steel bolts and shafts, threadlocking, pipe sealing, gasketing, retaining.





DISCLAIMER

Bostik offers this Product Catalogue for descriptive and informational use only. The Product Catalogue is not a warranty, a contract or a substitute for expert or professional advice.

The statements, technical information and recommendations contained herein are not exhaustive, are believed to be accurate as of the date hereof, and are not warranted or guaranteed in any way. They represent typical results for the products and are based on Bostik's research only. The Product Catalogue relies upon your knowledge and input, and as such, its results are based solely upon the information you provide and the choices that you make. Since the conditions and methods of use of the products and the information relied upon by you are beyond our control, Bostik expressly disclaims any and all liability and damages that may arise from any use of the Product Catalogue, the products, the results therefrom, or reliance on the information contain herein.

The Product Catalogue is one of several tools that may be used to help you find the product best suited for your needs. It is used at your own risk, and by using it, you are knowingly accepting and assuming any and all risks associated with its use, the recommendations contained in it, any output and your selections. The performance of the product, its shelf life, and application characteristics will depend on many variables, including but not limited to the kind of materials to which the product will be applied, the environment in which the product is stored or applied, and the equipment used for application, among other things. Any change in any of these variables can affect the product's performance. You are responsible to test the suitability of any product in advance for any intended use. Bostik does not guarantee the reliability, completeness, use, or function of the Product Catalogue or any recommendations arising therefrom. The data and information contained in the Product Catalogue is provided 'AS IS'.

The information provided herein relates only to the specific products designated and may not be applicable when such products are used in combination with other materials or in any process. **Bostik encourages you to always read and understand (1) the Technical Data Sheet ("TDS") and (2) the Safety Data Sheet ("SDS") for all products, which are located on our corporate website or are available upon request.** You are welcome and encouraged to contact your customer service representative to discuss your specific requirements and to determine what product is appropriate for you and your applications.

Nothing contained herein constitutes a license to practice under any patent, and it should not be construed as an inducement to infringe any patent. You are advised to take appropriate steps to be sure that any proposed use of the products will not result in patent infringement.

Bostik
an Arkema company
born2bond.bostik.com

08.2022
©2022 Bostik. All rights reserved.

